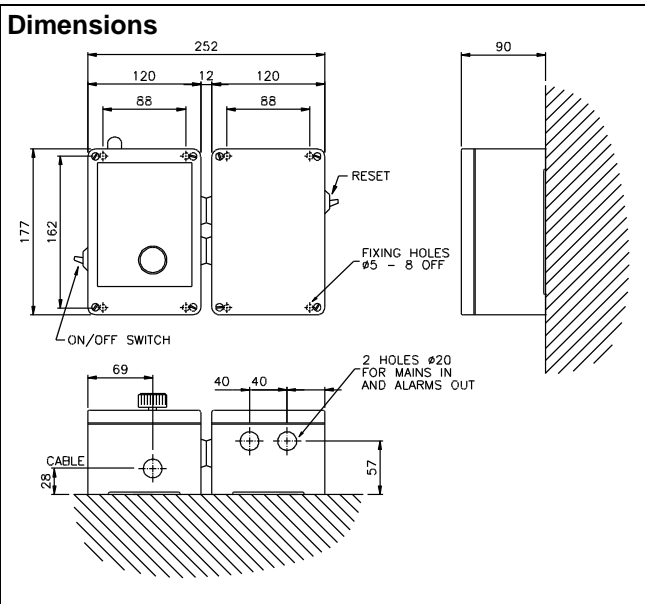


SOLENOID QUICK RELEASE Mk II

The Solenoid Quick Release Mechanism Mk II is designed to provide a simple electro-mechanical release mechanism for gravity-operated devices such as the Landon Kingsway free-fall fire valve.

The system consists of a steel cable wound around a drum with a solenoid arranged so that when energised, the drum is locked in place. If the electrical supply to the solenoid is interrupted then the solenoid latch releases the drum and the weight of the attached load causes the cable to unwind.

The Mark II version incorporates a safe power supply to a sump switch whereby the power to the external switch is cut if there is an emergency. The unit also provides two switched power outputs, one is normally on and turns off in the event of an alarm, the other is normally off and turns on in the event of an emergency.



INSTALLATION

The mechanism should be securely fastened directly above the load to be operated such that the cable follows an uninterrupted path from the mechanism. The length of the cable should be checked and needs to be long enough to allow the load to fall to its lowest level. If necessary, the cable can be extended provided that any joins in the cable do not enter the unit when the load is raised.

Electrical Connections:

- 5,6 Supply in
- 7,8 Normally-off switched supply out (may be used to power an alarm unit).
- 9,10 Switch wire connections
- 11,12 Normally-on switched supply out (may be used to shut-off an external system).

Technical Specification

Supply Voltage

10901002	230VAC
10901005	110vAC
10901006	24vDC
Power	20W
Switched Supply	8A Max
Enclosure	Red painted cast aluminium
Dimensions	252 x 177 x 90mm (W,H,D)
Fixing Centres	220 x 162mm Ø5mm
Weight	3.6 kg
Maximum load	13.6 kg (30 lbs)
External Alarm Supply	(As per supply Voltage)

OPERATION

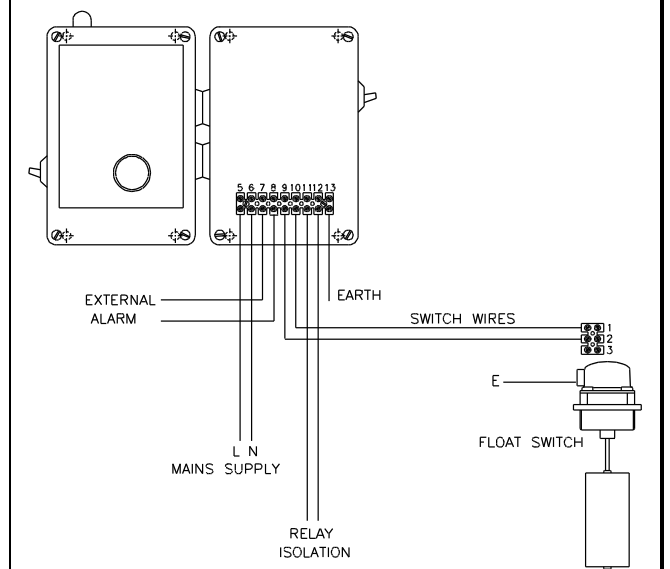
The unit has an on-off switch on the left side of the case and a momentary switch on the right side of the case which is used to reset the latch.

To set the mechanism, first check that the power switch on the left side of the case is off (up) then lift the load into the 'normal' position and while keeping the cable under tension, wind in the cable by turning the knob on the unit in a clockwise direction. Do not turn in an anticlockwise direction or try to lift the weight of the fire valve by turning the knob as this will damage the unit.

Press the switch on the left side of the unit down to turn the unit on and latch the system via the momentary switch on the right side of the case. The solenoid will 'click' on to latch the cable drum and the lamp on the top of the unit will light.

If the solenoid fails to engage, check that the switch wires are correctly connected to the normally closed contacts on the sensor/float.

Wiring Diagram



If you have any questions or need any help then please contact our sales office.