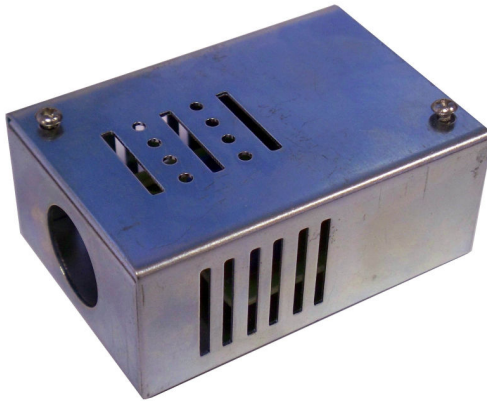


ELECTROTHERMAL LINK MKII

The electro-thermal link is installed above any potential fire risk so that the thermal fuse melts in the event of a fire starting.

The link is connected in a normally closed electrical circuit so that if it melts an alarm is generated.



Technical Specification

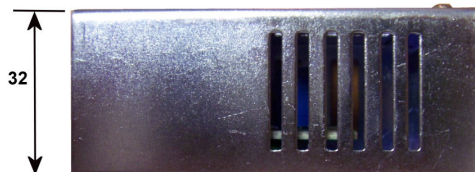
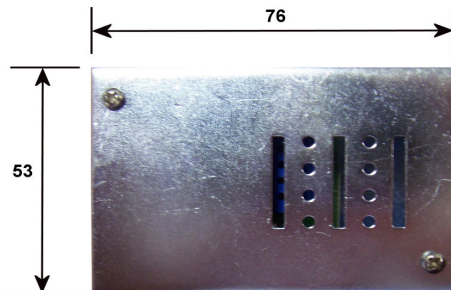
Enclosure	Zinc coated pressed steel.
Dimensions	53 x 76 x 32mm
Fixing centres	36.5 x 62mm (2 off), Ø4.5
Electrical connection	CM20 hole in side
Electrical rating	up to 250V 50Hz, 10A
Thermal fuse	73°C (163.4°F) standard
Optional fuses (to special order)	94°C (201.2°F), 113°C (235.4°F), 133°C (271.4°F), 172°C (341.6°F),
Replacement fuses	Available in packs of five.
Weight	0.1kg

INSTALLATION

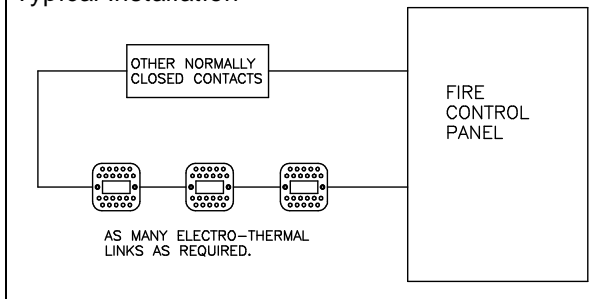
The unit should be mounted between 0.3 and 1.0 metres above the burner or boiler being protected as recommended in BS799. The perforated cover should face downwards and the vent holes in the back of the case must not be obstructed to allow free passage of air across the thermal fuse.

Units for use on mains voltages should only be installed by a suitably qualified electrician to the latest issue of the IEE Wiring Regulations.

Dimensions



Typical Installation



If you have any questions or need any help then please contact our sales office.

