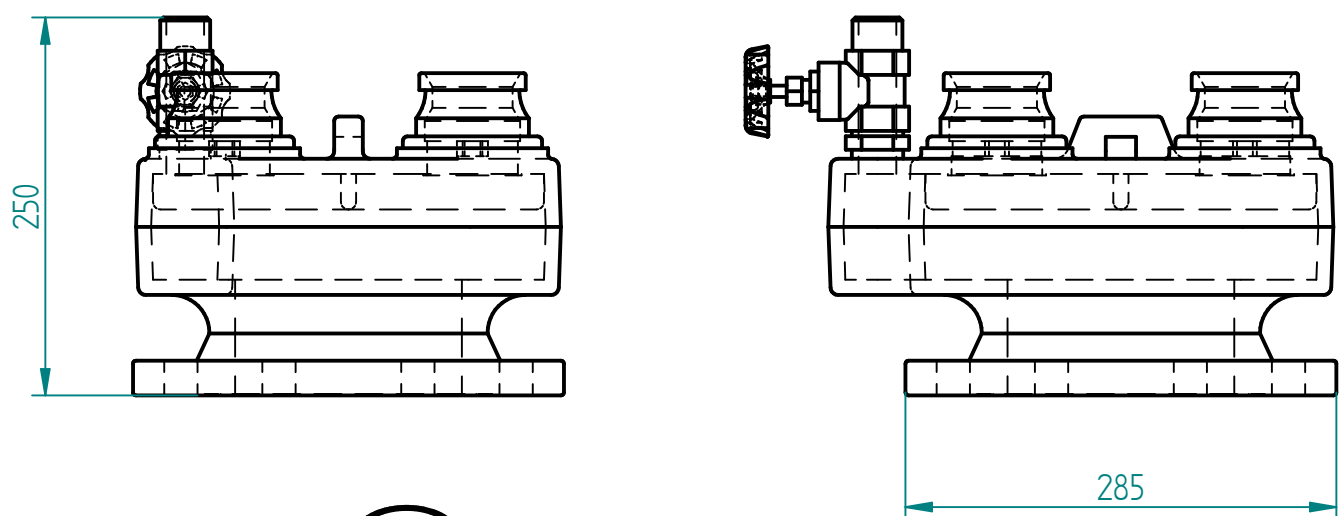
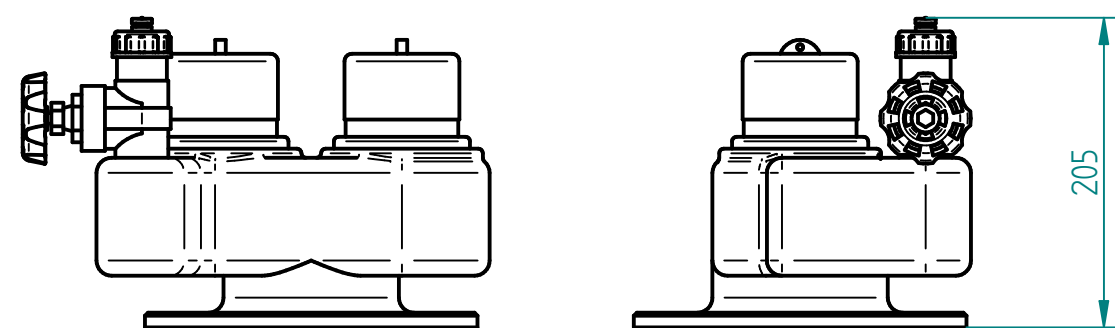


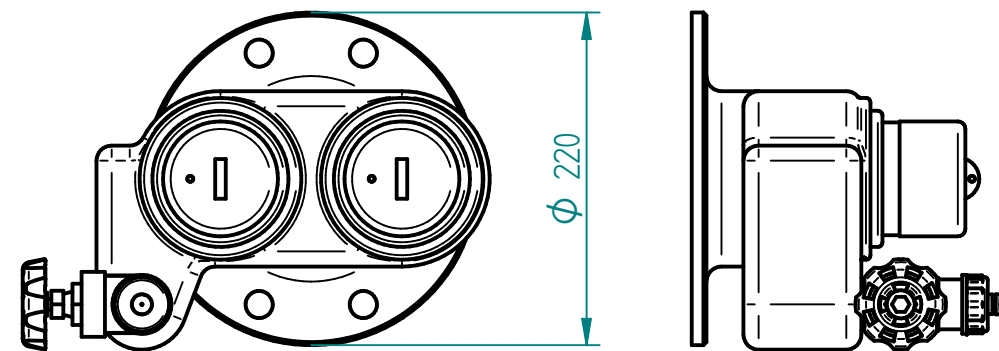
LK15114
Dry Riser Gate Valve
Flanged 2 1/2" PN16



99020735
4-way Inlet Breeching Valve
Flanged 150MM PN16



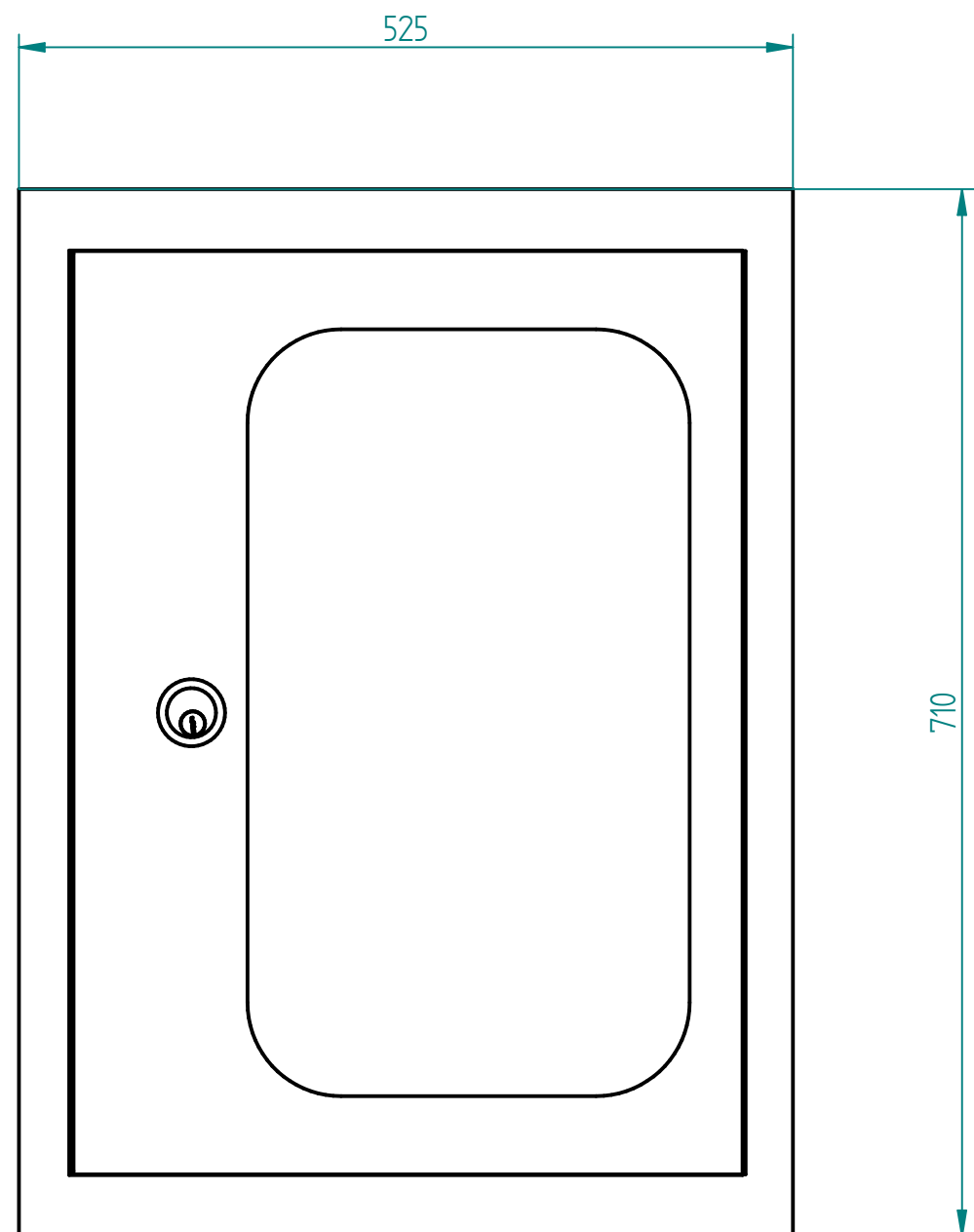
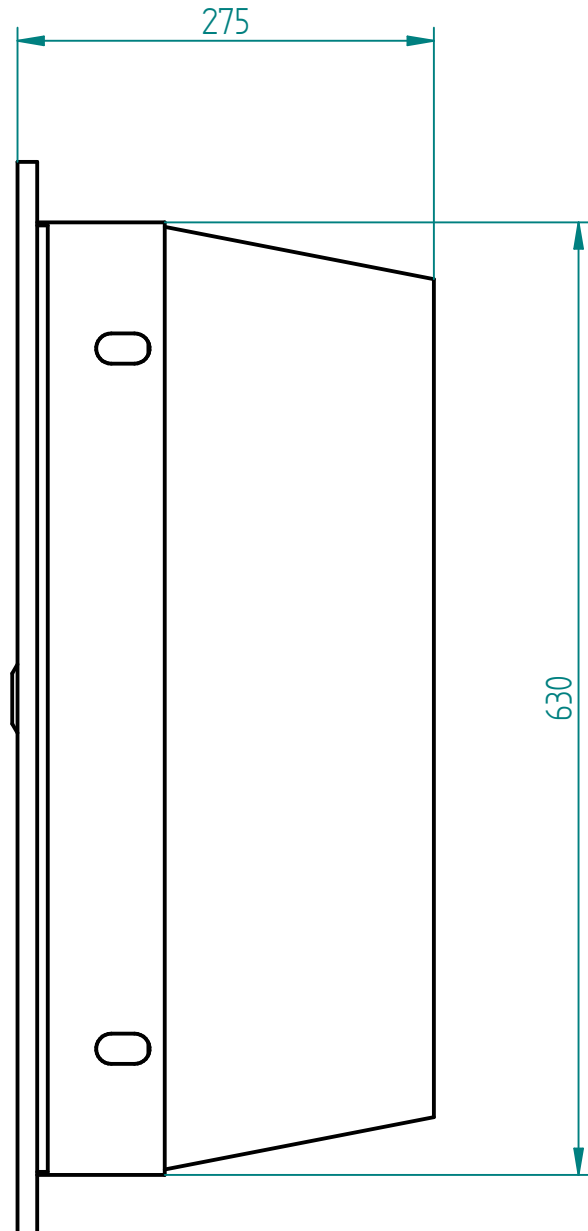
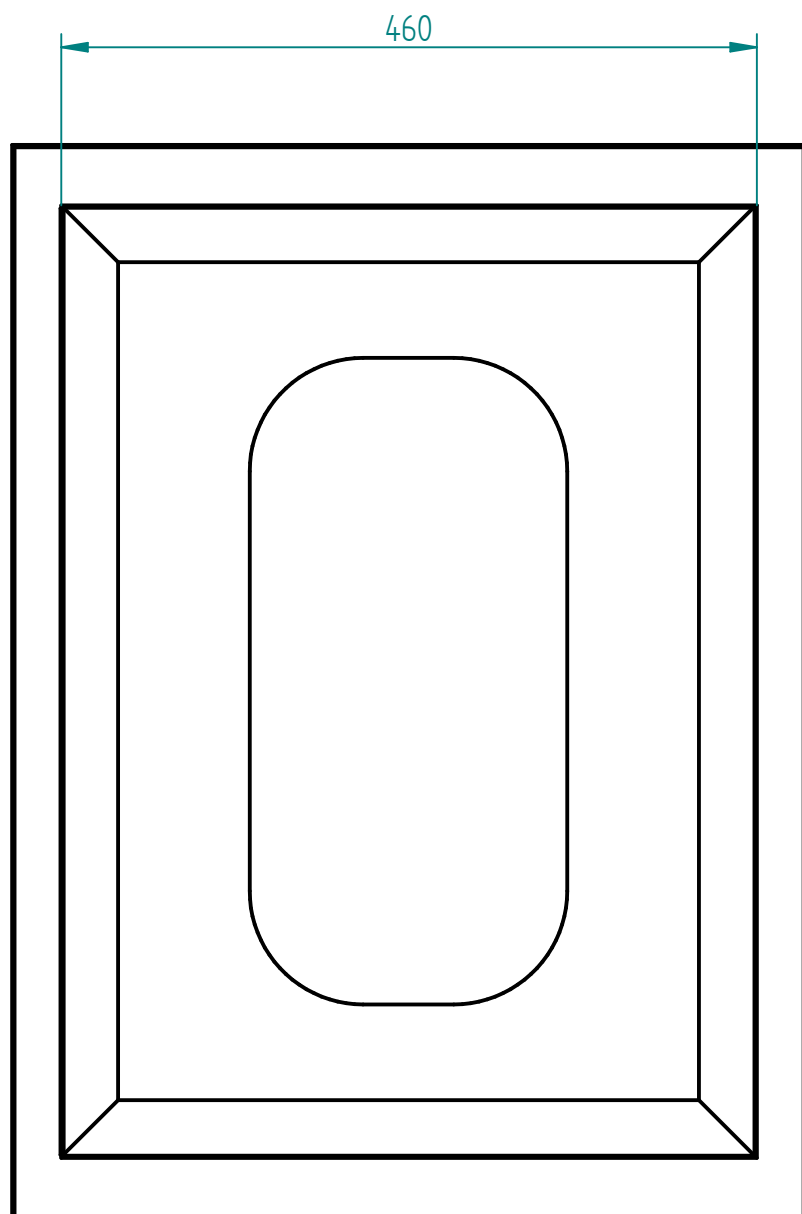
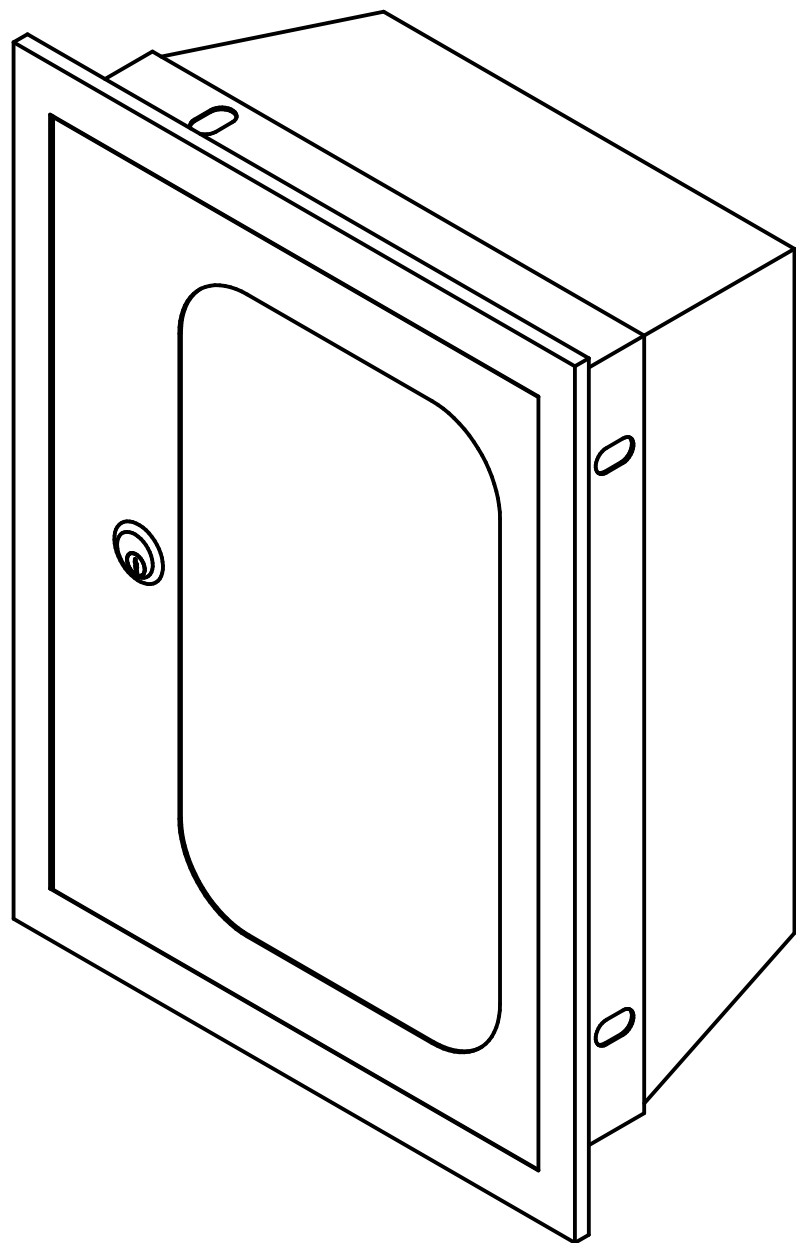
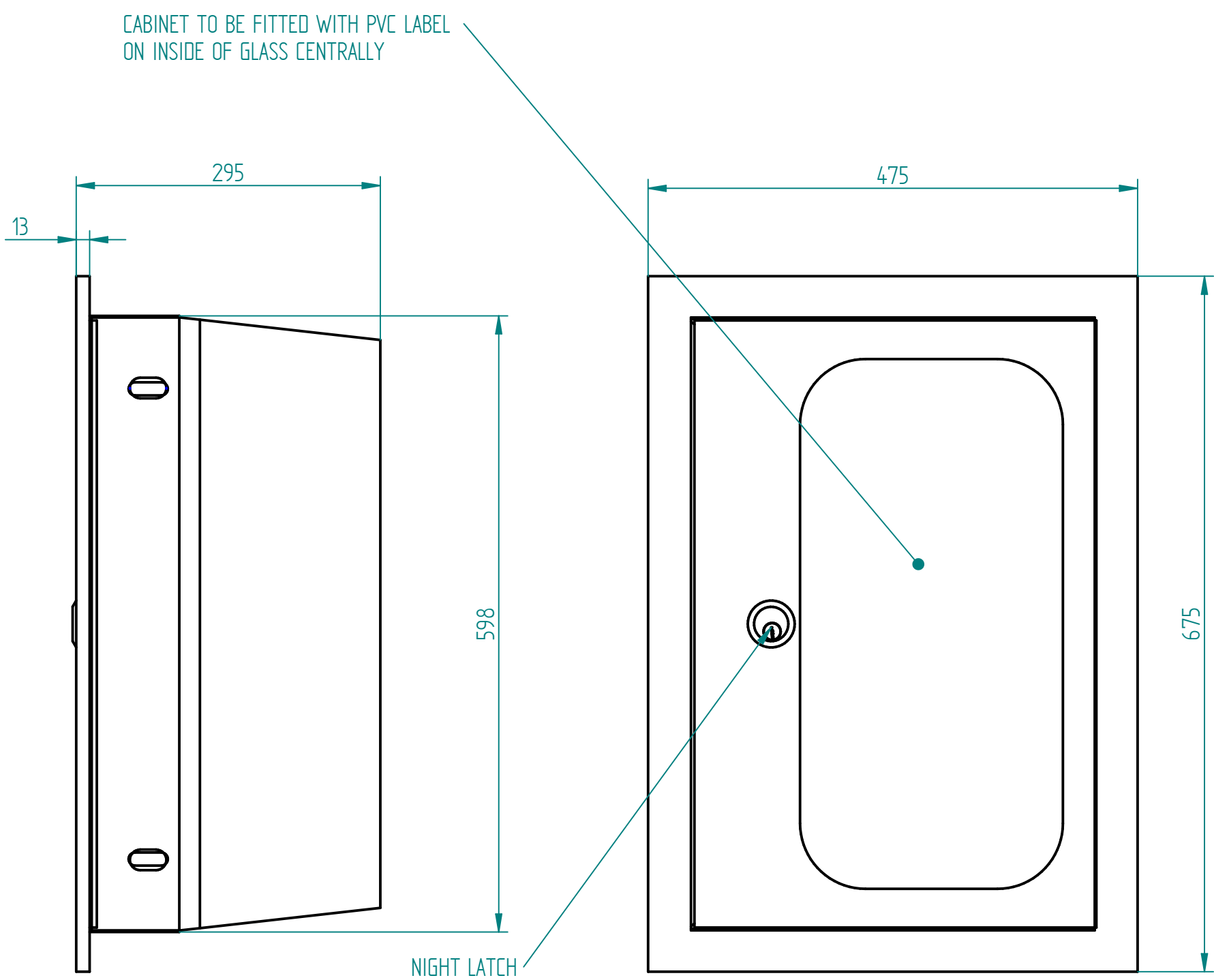
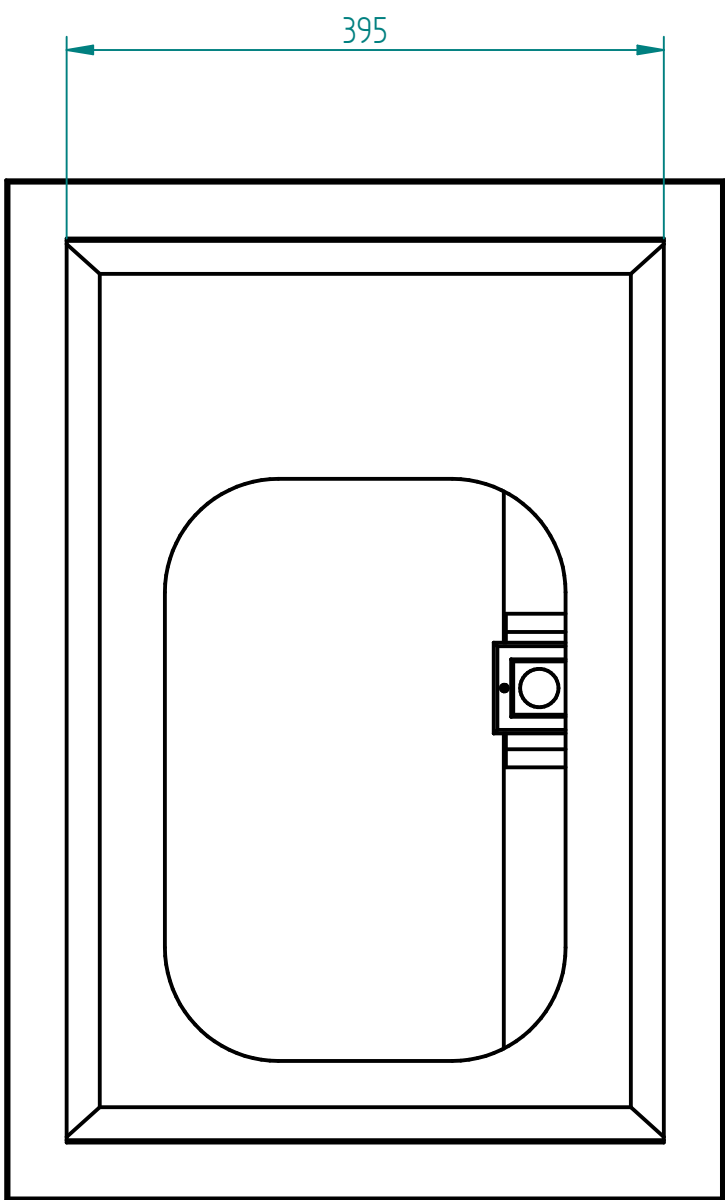
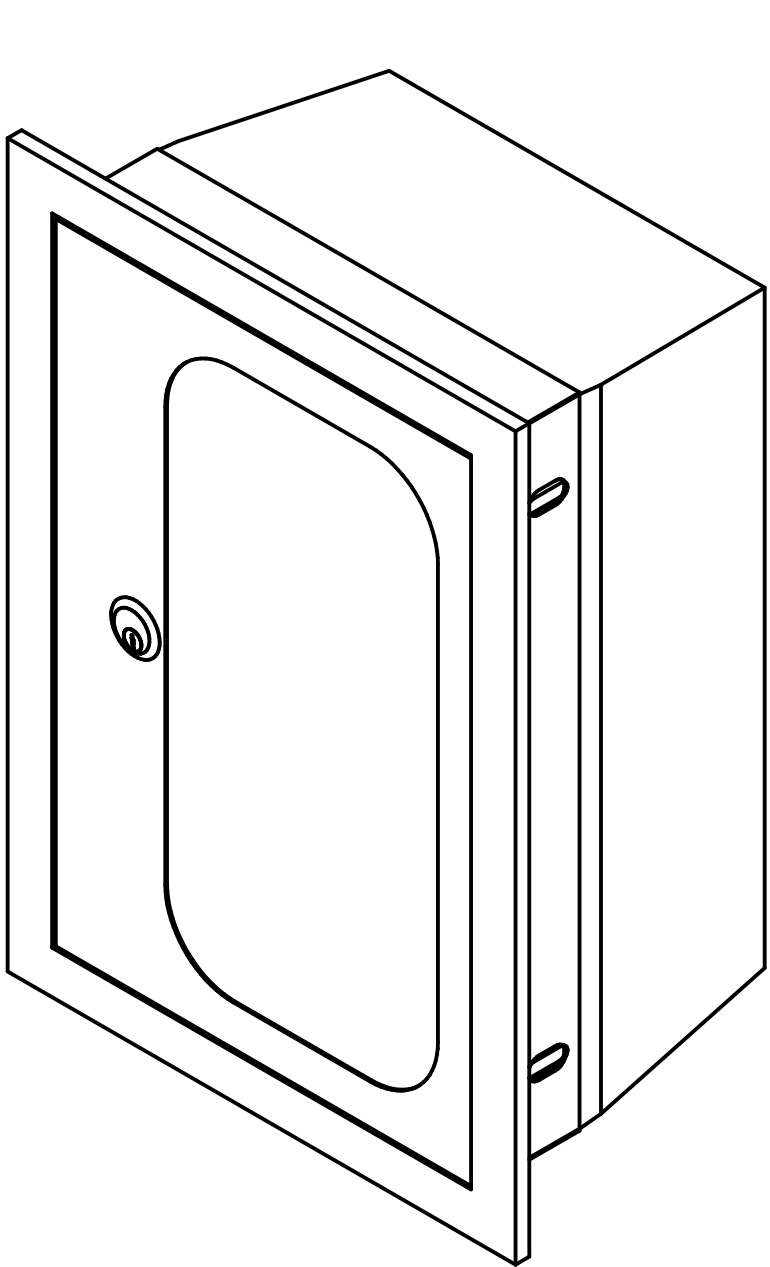
LK15135
2-way Inlet
Breeching Valve
Flanged 100MM
PN16



LK15141
1" BSP DRY RISER AIR RELEASE VALVE

www.landonkingsway.com

10905502 Dry Riser Inlet Vertical Cabinet
10905502SS Stainless Steel Inlet Vertical Cabinet
MINIMUM APERTURE: 405mm Wide x 605 High X 305 Deep



10905601 Dry Riser Outlet Cabinet
10905602SS Dry Riser Outlet Cabinet
Stainless Steel
MINIMUM APERTURE: 640mm High X 480mm Wide x 290mm Deep

LANDON KINGSWAY CAN ALSO SUPPLY
VARIATIONS OF THE ENCLOSED EQUIPMENT
INCLUDING WET RISER AND FOAM
SPREADING EQUIPMENT

REVISION HISTORY			
REV	DESCRIPTION	DATE	APPROVED
3	CAB UPDATED	16/05/23	KA

NAME	DATE	TITLE	
DRAWN paulaston	02/07/21	DRY RISER EQUIPMENT	
CHECKED KA	02/07/21		
ENG APPR			
MGR APPR			
UNLESS SPECIFIED DIMENSIONS ARE IN MILLIMETERS 0 PL DECIMAL +5		SIZE DWG NO A1 DRY RISER EQUIPMENT	REV 3
1 PL DECIMAL +0.4 2 PL +0.15 ANGLES +0.5°, HOLES +0.08 -0.03 THREADS TO BS3643-60/6H		FILE NAME: DRY RISER EQUIPMENT.dft	
SCALE: 1:5		WEIGHT: N/A	SHEET 1 OF 1