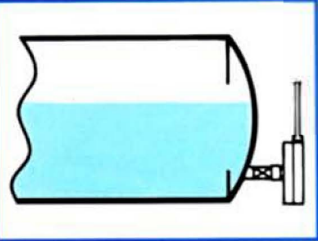
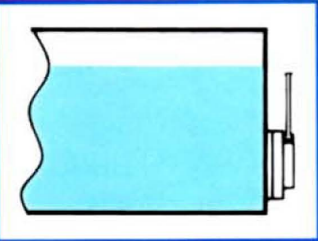


Typical Sensor Applications



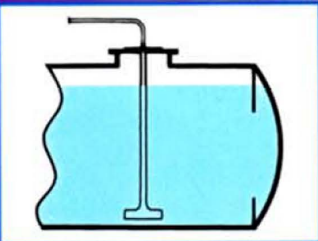
ES

Widely used for both industrial and marine applications, the ES is a sensor offered in a range of materials which include Mild Steel, Brass, Stainless Steel (316). The sensor has a 3/4" BSP female coupling for easy installation to the storage vessel.



SM

As with the ES the SM is used for both industrial and marine applications and can also be manufactured from the same range of materials. The SM sensor has been designed for the measurement of highly viscous liquids that would tend to congeal within the chamber of an enclosed type sensor.



IS and IS (T)

The IS and IS (T) are internal sensors for industrial and marine uses. Materials of construction are as used for types ES/SM. These sensors are ideal for use on tanks where the only access is via manhole covers.

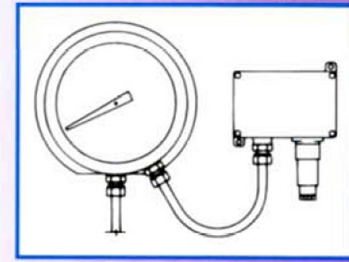


IS and IS (T)

The IS and IS (T) are internal sensors for industrial and marine uses. Materials of construction are as used for types ES/SM. These sensors are ideal for use on tanks where the only access is via manhole covers.

LANDON KINGSWAY

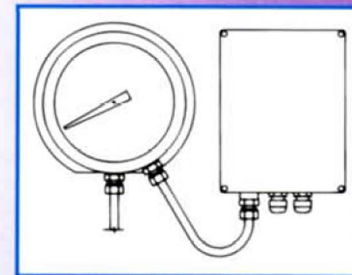
TANK GAUGE EQUIPMENT



GAUGE / GAUGE + LK10

The LK10 is a two wire 4-20mA transmitter which has been designed for the industrial market. The LK10 is simply coupled to a sensor by a length of capillary allowing it to be mounted close by if required or if in the event of a hazardous area the capillary can be extended to allow mounting in a safe area.

As the LK10 operates on the same inert gas system as the hydrostatic gauge the two can be coupled together to give both gauge indication and a 4-20mA signal. With the gauge giving a continuous read out locally the LK10 can operate analogue indicators at a distance while also giving a 4-20mA signal to a B.M.S. Additional items as trip amplifiers can also be wired into the current loop for switching or alarm.



400 SERIES Gauge +400

The 400 series can give single or multi-level switching when coupled to a sensor by a length of capillary. Typical arrangements for this type of application are for High/Low alarm or pump operation. The precision micro switches are rated 250V-10 Amps. Coupling the 400 series to a contents gauge shows visual display of tank contents while giving all the options of pump control or High/Low level alarm contacts.

Unit 2, Wharton Street Ind. Est.
Nechells
BIRMINGHAM
B7 5TR
Tel: +44 (0) 121 327 7881
Web: landonkingsway.com
Email: sales@landonkingsway.com