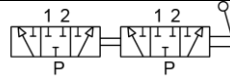


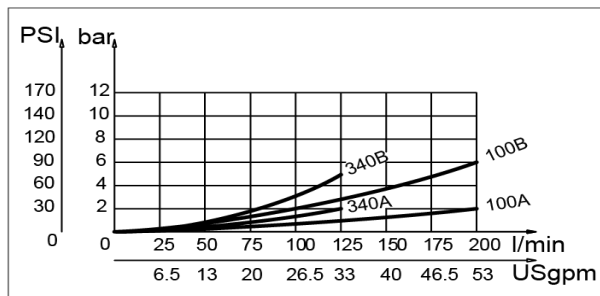
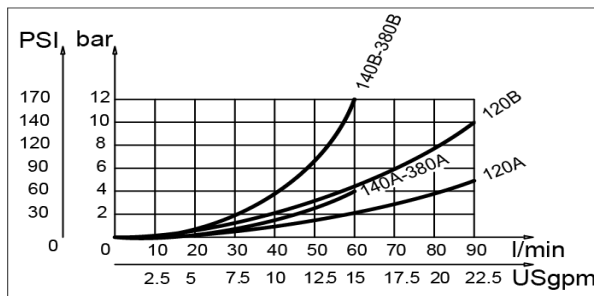
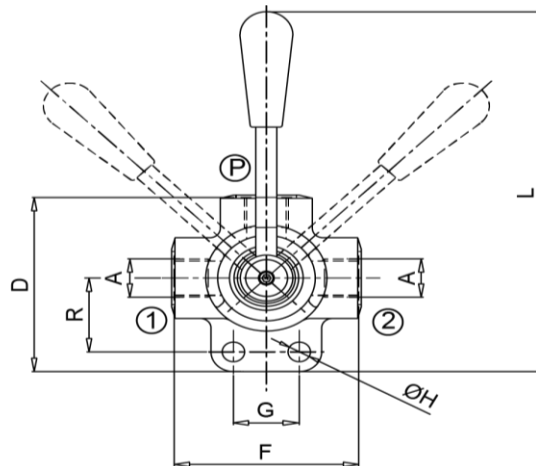
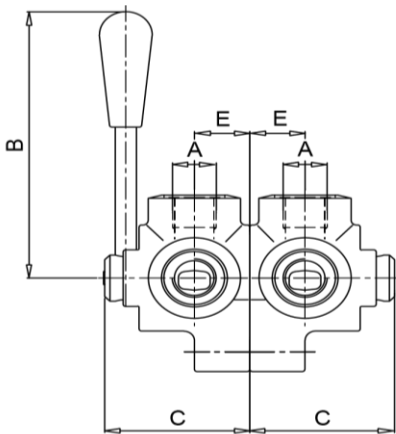
Fuel Tank Diverter Valve 6 Way

The Fuel Tank diverter valve 6 way allows you to connect to an auxiliary fuel tank for longer running times. This cost-effective solution is used for extending the fuel capacity of your generator. The 6-way version is used to select between tank 1 and tank 2, Belly Tank and Day Tank for flow and return. The mid position of the closed center type stopping transfer of fuel between tanks.



Feature

- Screwed BSPP female connections
- Cast Iron Body
- Max Leakage: 7 drops per minute at 200bar
- Fluid Viscosity: 45 to 2000 SSU (6-420cSt)
- Media Temp: -20°C to +80°C
- Max Pressure 300Bar
- Temperature -20°C to 50°C.



Part Number	Description	Thread size	B	C	D	E	F	G	H	L	R
LK/FTD6/10	DN10 Fuel Tank Diverter Valve 6 Way	3/8"	115	57	75.5	21	70	25	8.5	155.5	32
LK/FTD6/15	DN15 Fuel Tank Diverter Valve 6 Way	1/2"	115	63	86	24	80	32	8.5	161	36
LK/FTD6/20	DN20 Fuel Tank Diverter Valve 6 Way	3/4"	115	67	98.5	26	90	32	10.5	168.5	42
LK/FTD6/25	DN 25 Fuel Tank Diverter Valve 6 Way	1"	115	77	110	31	98	32	10.5	176.5	150

To be installed by suitably trained and qualified personnel. Any legal regulations or regulations issued by authorities must be observed during installation.